

dHouse
be different

RESIDENCES MODELS

Brochure

& SPECIFICATION

LUXURY VILLA

Modul & on-site building Technology

Our modul & and on-site buliding housing options give you eco-friendliness, cost-effectiveness, and operational efficiency.

By easily combining the newest building technologies and flexible designs, they are creating a future for houses that is friendlier to the environment and affordable. Made with careful attention to details and using high-quality materials, these homes are fancy and stylish in a way that's hard to beat.

WWW.DHOUSE.MK

LUXURY VILLA

Villa Grandiosa 2

BRUTO SPACE: 333,52 m²

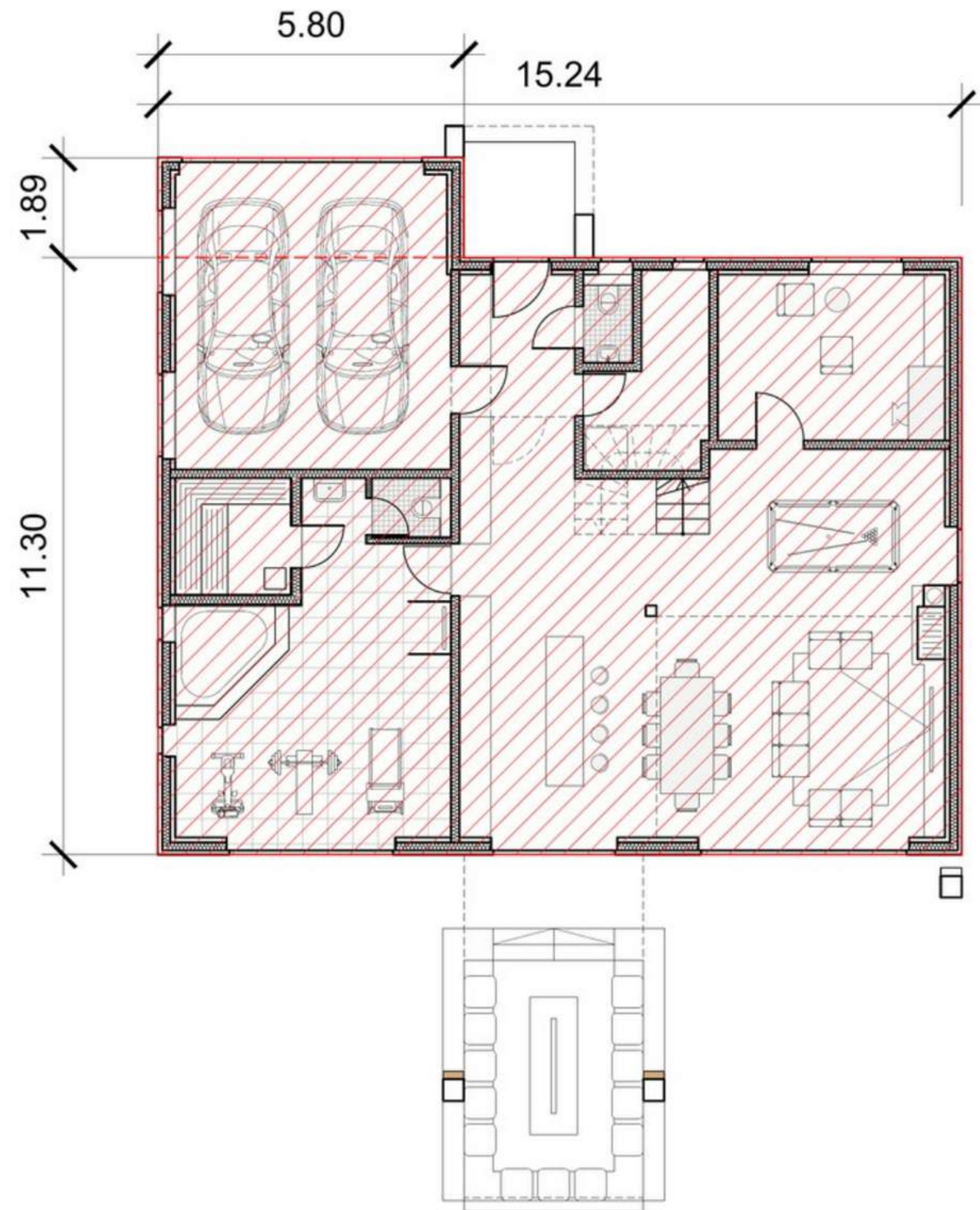
NETO SPACE: 303.07 m²

The most expensive thing is the thing that you won't pay for only once.

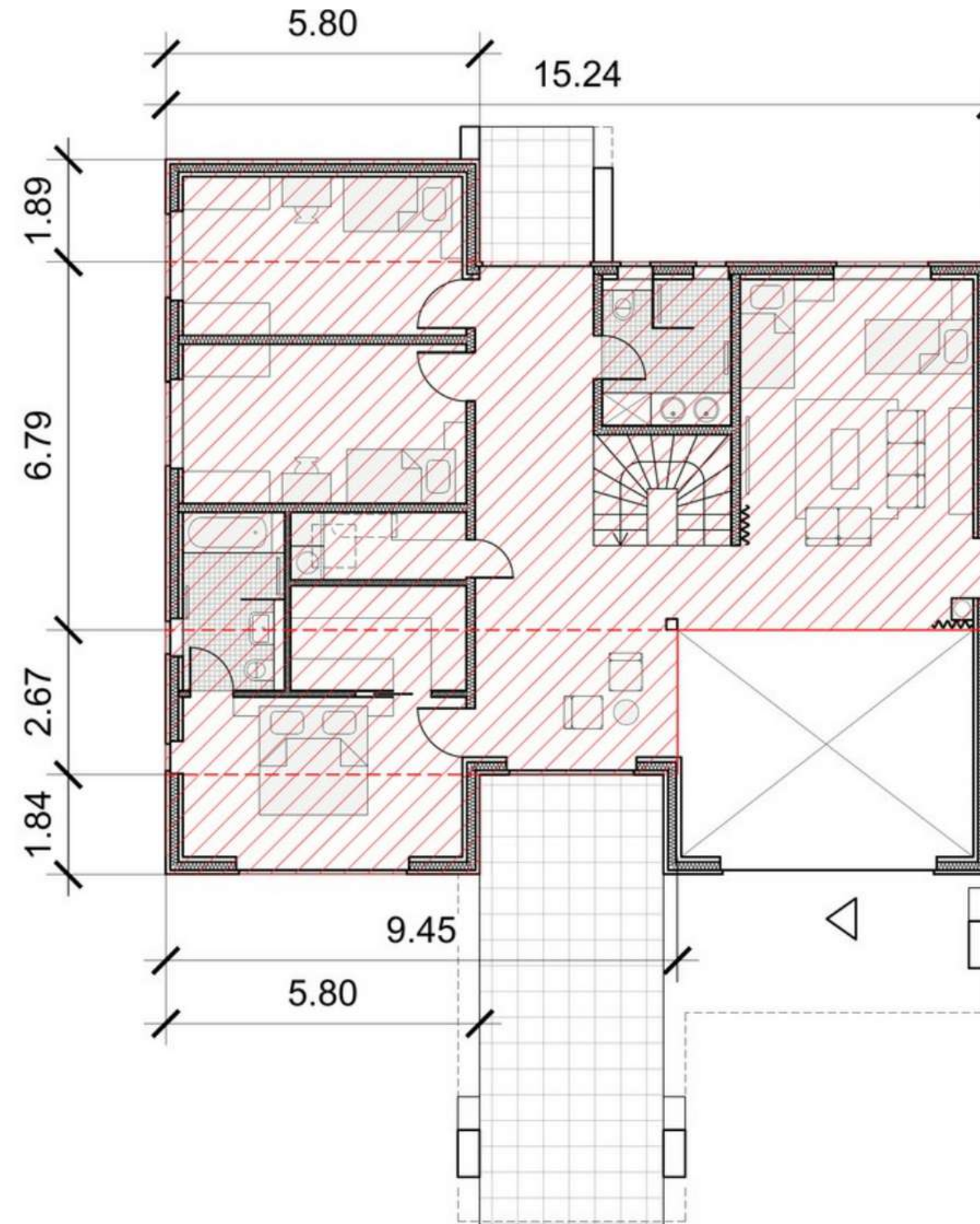
WWW.DHOUSE.MK



GROUND FLOOR



FIRST FLOOR



Villa Grandiosa 2

GROUND FLOOR

	SPACE
Pantry	6,63 m2
Garage	29,03 m2
Hallway	12,39 m2
Toilet 1	1,57 m2
Kitchen	17,07 m2
Dining room	14,42 m2
Living room	28,40 m2
Office	13,53 m2
Wellness	27,79 m2
Toilet 2	1,66 m2
Sauna	5,13 m2
Terrace	11,14 m2

FIRST FLOOR

Apron	26,74 m2
Gaming room	27,73 m2
Bathroom 1	6,47 m2
Bedroom	15,32 m2
Bathroom 2.....	6,20 m2
Wardrobe	6,28 m2
Kid's room 1	15,36 m2
Kid's room 2	15,16 m2
Lobby	3,92 m2
Terrace	7,09 m2
Pantry	4,04 m2

LUXURY VILLA



LUXURY VILLA

A flawless fusion of contemporary design and sophistication, featuring expansive windows that embrace the beauty of nature, transforming your living experience.



INSPIRE



The use of eco-friendly construction materials and appliances minimizes or eliminates any negative impact on the environment

These houses provide construction flexibility, adapting to diverse elements for various projects. Supported by internationally acknowledged performance certifications and reputable materials and brands, our work reflects professional expertise.

Embracing harmony with nature in the realm of green construction, our Traditional Houses enable a connection to the environment, featuring eco-sustainable building materials and non-toxic finishes. The green approach promotes fresh air and a healthier living environment.

By merging construction quality, sustainability, and efficiency, each of our modular building systems offers a versatile solution for both public and private sectors.



Eco, Bio & Green

LISABON



Exemplary
excellence and a
mindful finesse.

We elevate your living standards by providing high-quality structures and comfort, presenting you with budget-friendly, durable, and eco-conscious prefabricated homes

Professionals in the field handle all isolations and installations, ensuring a quicker delivery compared to reinforced concrete homes. You can safely enjoy its robust structure for many years. Our modular homes are crafted with the aim of enhancing and simplifying your life.

Villa Lisbon

GROUND FLOOR



FIRST FLOOR



GROUND FLOOR

SPACE

Garage	29,03 m2
Toilet	2,6 m2
Dining room , living room and kitchen space	36,52 m2
Bedroom	9,85 m2
Hallway.....	6,37 m2

FIRST FLOOR

SPACE

Toilet	4,09 m2
Bedroom 1	10,09 m2
Bedroom 2	9,61 m2
Bedroom 3	10,38 m2
Hallway	12,93 m2

Lisabon Villa 104m2

Main Entrance



Our Villas aren't just residences, they are a testament to refined living, where every room resonates with comfort and warmth.

dHouse
be di erent

Discover a realm of extraordinary living with our exquisite Villas, where each moment is a symphony of luxury and serenity. Step into a haven where modern elegance intertwines with the whispers of nature, inviting you to embrace a lifestyle that transcends the ordinary.

WWW.DHOUSE.MK

Lisabon Villa

Cosy Haven: Embrace the Warmth Within

As the sun dips below the horizon, the world beyond my window takes on an ethereal charm. The gentle rustle of leaves and distant chirping of crickets create a serene atmosphere against the backdrop of fading light. Streetlights flicker, casting dancing shadows upon the pavement, while stars emerge one by one in the darkening sky. Beyond these walls lies a realm of endless intrigue, where every corner holds the promise of discovery and wonder.

In the silence of the evening, the outside world becomes a canvas of whispered mysteries. Shadows stretch and sway, hinting at unseen adventures waiting just beyond reach. The air is alive with anticipation, as if nature itself is holding its breath in anticipation of the night's unfolding magic.

Lisabon Villa

Kitchen, bathroom & stairs

Kitchen Space:

Our kitchens are more than culinary arenas; they're canvases for creativity. Here, every meal becomes a masterpiece, and the heart of the home beats with the rhythm of shared moments.

Bathroom:

Step into our bathrooms, where routine meets rejuvenation. Beyond functionality, they are havens of tranquility. Soft lighting and soothing textures create an intimate retreat, turning everyday rituals into moments of self-care.

Eco, Bio & Green

IGNACIA

Welcome to a villa that transcends traditional boundaries.

This uniquely shaped residence is an architectural marvel, blending modern design with artistic flair.

The exterior curves and angles create a dynamic silhouette that stands as a testament to innovation. Inside, the space is a harmonious blend of openness and coziness, with large windows framing picturesque views and allowing natural light to cascade throughout.

This shape villa is not just a home; it's a living sculpture, an embodiment of contemporary elegance, where each angle tells a story of modern luxury and style.



build

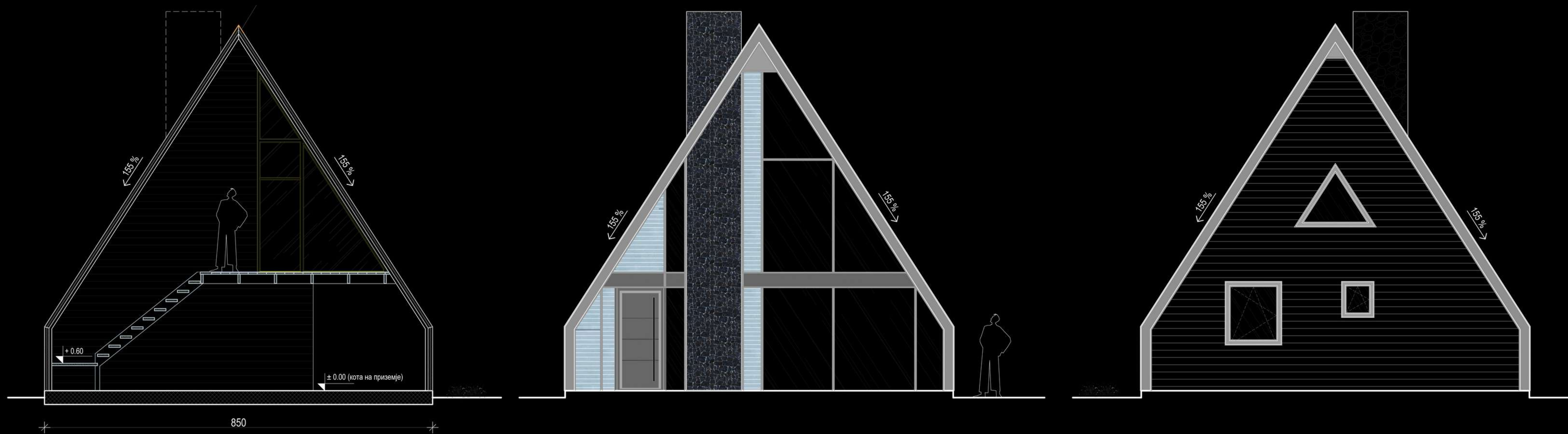


THE POWER OF A - SHAPE - IGNACIA

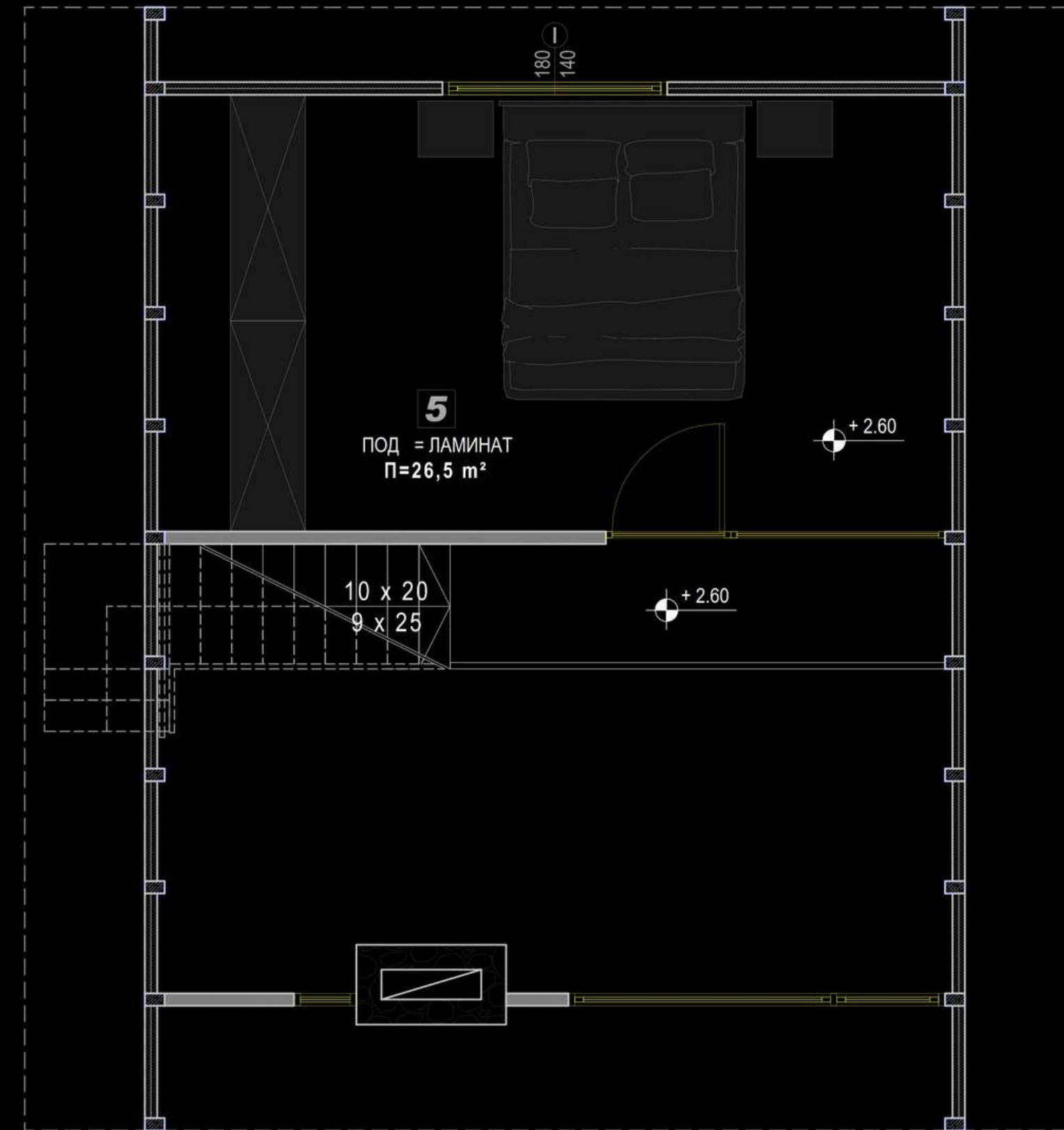
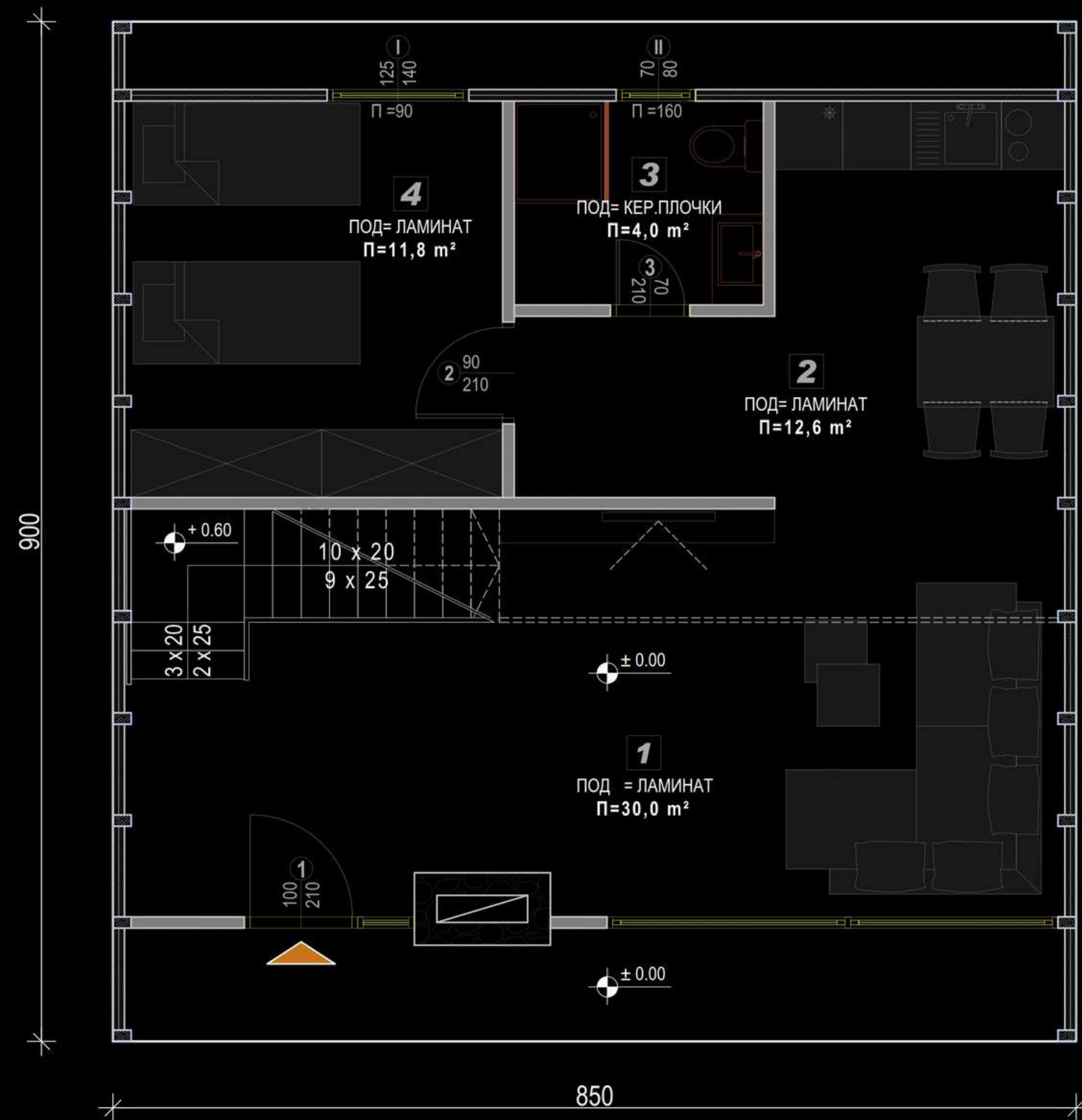
Live in the poetry of angles, where your home is a sculpted masterpiece, echoing the rhythm of modern living and embrace the art of living in a house that dances with shapes, a sanctuary where every corner whispers a tale of design and innovation.

In this house find the poetry of living differently – where angles become stories, and architecture dances with imagination.

Intersection



Plan



GROUND FLOOR	SPACE
Living room	30 m ²
Kitchen and dining room	12,60 m ²
Bathroom	4,00 m ²
Guest bedroom	13,40 m ²

FIRST FLOOR	SPACE
Bedroom	27,00 m ²

BRUTO SPACE: 91,50 m²
NETO SPACE: 87,00 m²

Ignacia Villa

Living room

Step into our interior space, a fearless fusion of bold design choices, where every detail speaks volumes about individuality and unapologetic style



Eco, Bio & Green

DA VINCHI

Step into Villa da Vinci – where every space is a canvas, each detail a stroke of elegance, and your welcome begins a chapter in artful living.

Explore the Da Vinci House model – a blend of timeless elegance and innovative design inspired by the genius of Leonardo da Vinci.

This living space is a tribute to art, functionality, and the seamless integration of classic aesthetics with modern technology

We build ART

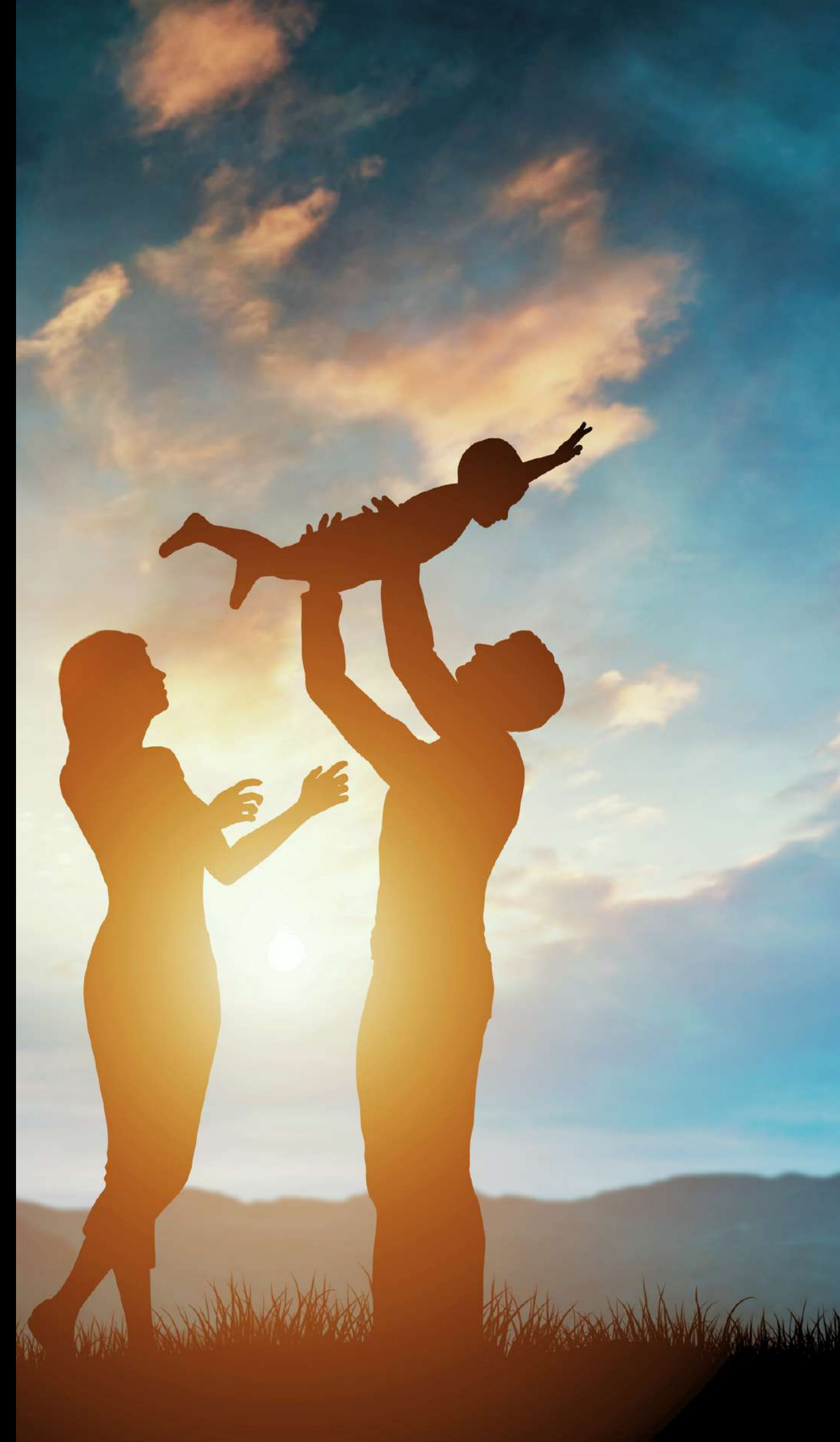
Our modular houses are designed to make your life easier and better for you.



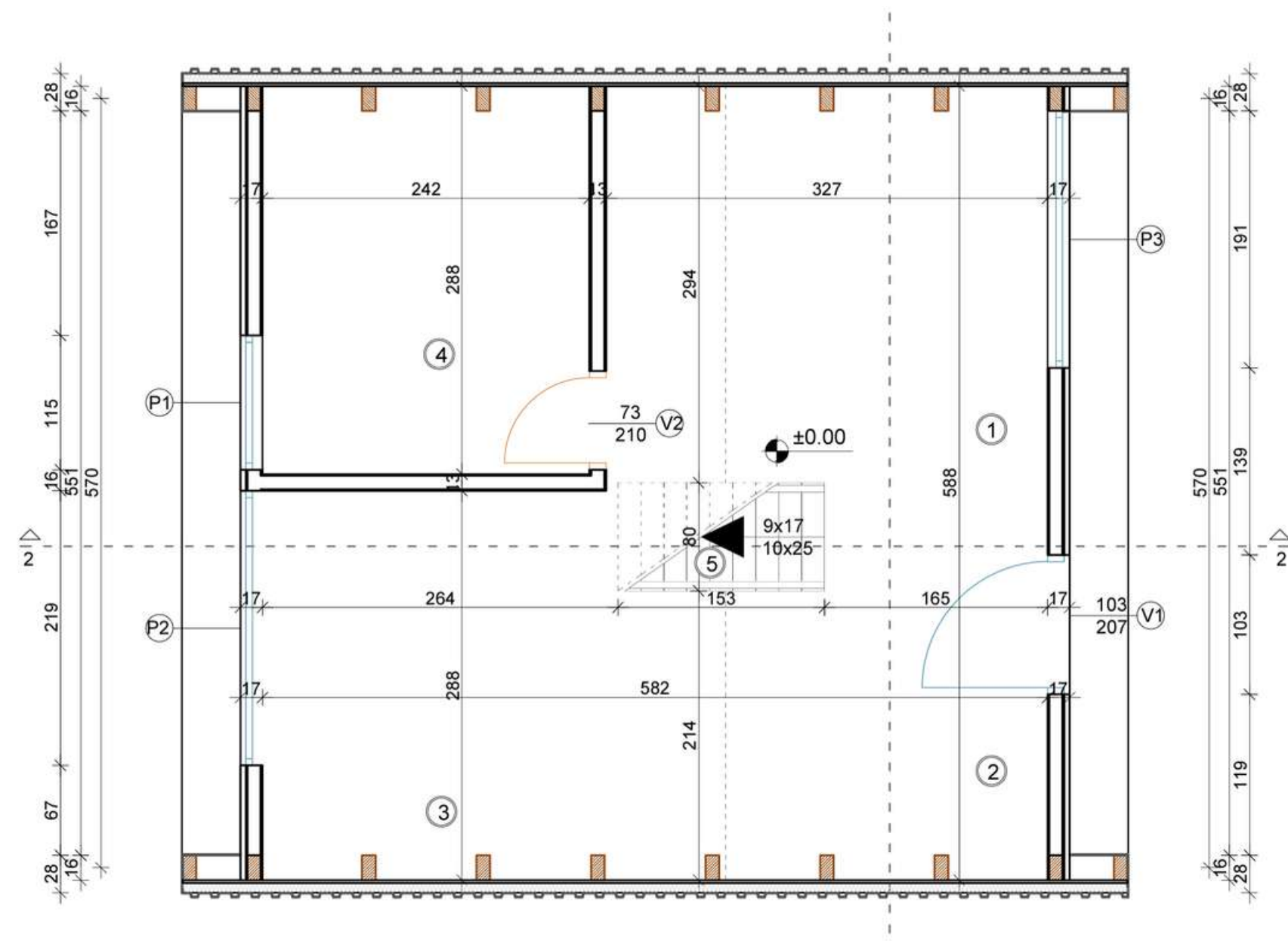
Villa DaVinci

BRUTO SPACE: 54 m²
NETO SPACE: 43.02 m²

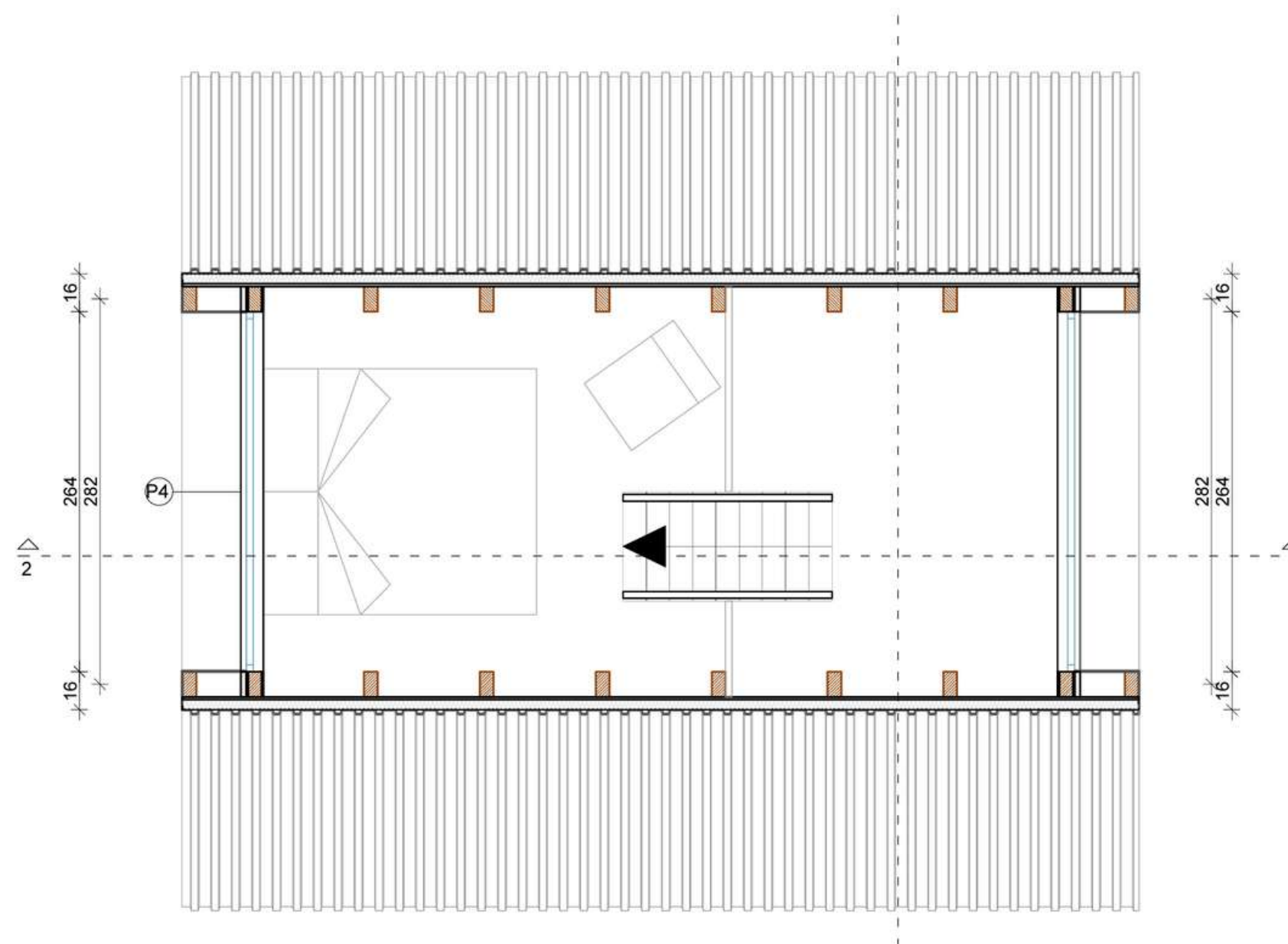
Find peace in the sanctuary of your home, where
tranquility resides in every corner and serenity
embraces every room.



GROUND FLOOR



FIRST FLOOR



Villa DaVinci

GROUND FLOOR

SPACE

Living room	9,56 m ²
Lobb	4,82 m ²
Kitchen with dining space	10,78 m ²
Bathroom	7,02m ²
Stairwell	1,22 m ²

FIRST FLOOR

SPACE

Bedroom	9,62 m ²
---------------	---------------------



dHouse
be different

Livingroom & Bedroom Space

D I S C O V E R

MODERN LIVING SPACE



Eco, Bio & Green

MORENA





Villa Morena

Extravagant

Welcome to our villa, where luxury meets tranquility in perfect harmony.

This is more than just a home – it's a sanctuary of elegance and relaxation, where every detail is thoughtfully curated to ensure a truly exceptional living experience. Welcome to your slice of paradise.

dHouse
be different



Villa Morena

BRUTO SPACE: 229,7 m²

NETO SPACE: 207 m²

Welcome to the elegant exterior of our home, where stunning architecture meets natural charm. With clean lines and beautiful landscaping, every detail exudes sophistication. Welcome to a world of luxury and serenity.

GROUND FLOOR



Villa Morena

GROUND FLOOR	SPACE
Master bedroom 1	28,9 m2
Bedroom 2	12 m2
Bedroom 3	12 m2
Bathroom.....	10,6m2
Toilet	3,2 m2
Living room	39 m2
Kitchen with dining space	31,9 m2
Pantry 1.....	2,5 m2
Pantry 2	4,5 m2
Sauna	4,2 m2
Garage	35,8 m2
Teracce	25 m2
Hallway	13,5 m2
Lobby	7,5 m2



Villa Morena

In this luxury home, the final touches are essential. From flawless marble floors to bespoke lighting fixtures, each detail exudes opulence.

Custom wallpapers and sumptuous textiles add to the refined ambiance, creating a space of unparalleled elegance.



CHOOSE

A

1



dHouse
be different

2



WWW.DHOUSE.MK

CONCEPT

Our modular houses are
designed to make your life easier
and better for you.



CHOOSE



A

3



dHouse
be different

4



WWW.DHOUSE.MK

CONCEPT



Villa Residence

AMBROZIJA



EXPOSURE

Unique

Enveloped in a peaceful forest, this cozy wooden house boasts a welcoming porch, perfect for enjoying the natural surroundings. Inside, sunlight streams through lovely windows, illuminating the warm wooden floors. With serene views from every room, it's a place for relaxation and enjoying nature's beauty.

Surrounded by nature's embrace, this inviting wooden home showcases a sprawling veranda, providing the ideal spot to unwind and revel in the serenity of the outdoors.



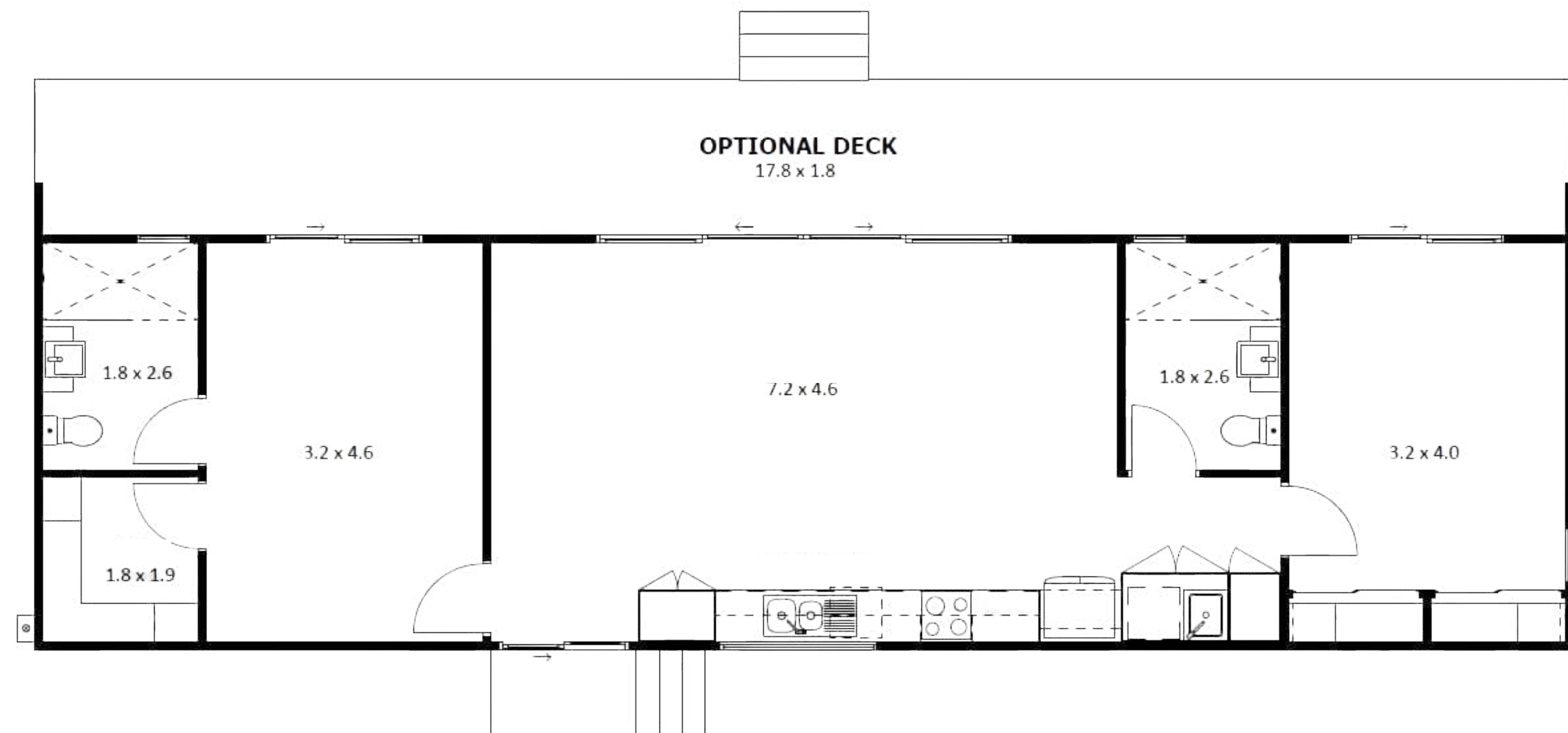
Villa Ambrozija

BRUTO SPACE: 78,4 m²
NETO SPACE: 70,64 m²

This house features a cozy porch that adds character to its exterior, inviting you to relax and enjoy its charming appeal. With its unique design and welcoming ambiance, it's the perfect spot to unwind and take in the beauty of its surroundings.

Villa Ambrozija

GROUND FLOOR



GROUND FLOOR

SPACE

Bedroom 1	14,72 m2
Bedroom 2	12,8 m2
Bathroom 1	4,68 m2
Bathroom 2.....	1,9 m2
Kitchen with dining space and living room	33,12 m2
Teracce	32,04 m2
Warehouse space	3,42 m2

Majestic, Elegant, Timeless

ARABELA





Moments

In the heart of our serene white house, surrounded by the lush greenery of our yard, our family gathers. Laughter echoes as children play beneath the shade of towering trees, while adults share stories and create new memories.

In this tranquil oasis, amidst the beauty of nature, our bonds grow stronger, and moments together become the most precious treasures of all.

Villa Arabela

Stunning

Inspiring

Harmonious

The backside of our lovely white house is a tranquil oasis, embraced by a verdant yard that enchants the soul. Bathed in sunlight, the elegant facade stands gracefully amidst lush greenery, offering a serene retreat. Every moment becomes a cherished memory, woven into the fabric of this cherished home.



GROUND FLOOR



Villa Arabella

GROUND FLOOR

SPACE

Bedroom 1	15,96 m2
Bedroom 2	10,2 m2
Bedroom 3	10,2 m2
Bedroom 4/study	11,16 m2
Kitchen with dining space and living room	52,7 m2
Pergola deck	31,5 m2
Porch deck	2,76 m2
Bathroom	6,8 m2
Laundry	5,78 m2
Hallway	4,4 m2
Pantry	3.06 m2
Toilet	4,18 m2

H I G H

F L Y

BRUTO SPACE: 176 m²
NETO SPACE: 158,7 m²



Bold, Eye-catching, Warm

RED DIE



In the heart of the countryside, a red house stands out with its unique charm. Its bold facade catches the eye, promising a distinctive living experience.



H
I
S
T
O
R
Y
C
H



GROUND FLOOR



Villa Reddie

GROUND FLOOR	SPACE
Entry	4,6 m2
Bedroom 1	11,3 m2
Bedroom 2	9,1m2
Bedroom 3	9,1m2
Bedroom 4	9,9 m2
Living room with dining space	30,7 m2
Kitchen	17,6 m2
Living room 1	10,6 m2
Hallway	6,2 m2
Corridor 1	3,7 m2
Bathroom	4,5 m2
Toilet	3,2 m2
Corridor 2	2,6 m2

Living room

Find pleasure in

Elegant

This room serves as a sanctuary of luxury, inviting guests to unwind and immerse themselves in its sumptuous ambiance.

In the luxurious living room, opulence meets comfort seamlessly. Adorned with bold, rich-colored furniture, it exudes sophistication.

Plush velvet sofas invite relaxation, complemented by intricate coffee tables and ornate lighting. This space epitomizes lavish living, inviting all to bask in its splendor.

dHouse
be different

dHouse
be different

A R T



BRUTO SPACE: 169 m²
NETO SPACE: 150 m²

ENJOY THE POSSIBILITIES

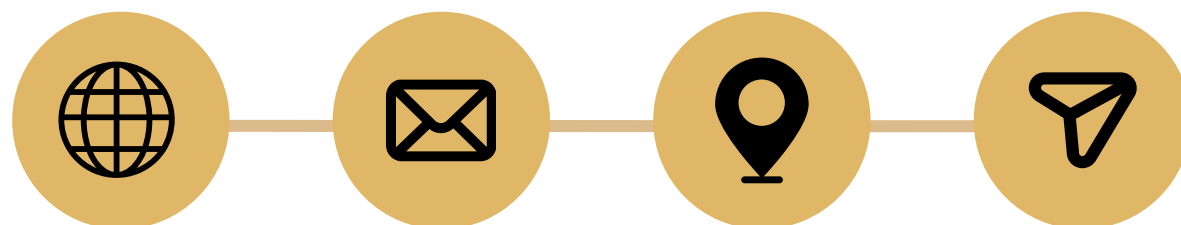
dhHouse
erent





Sara
Davkovska

REAL ESTATE AGENT



dHouse LTD

PHONE

+389 76 330 033

EMAIL & SITE

hello@dhouse.mk
www.dhouse.mk

ADDRESS

Slavejko Arsov 38, Skopje

SOCIAL MEDIA

@dhouse_ltd